



*Elite*  
HOTELS

DISTINCTIVE EXPERIENCES

  
Elite Diners

# WELCOME TO THE WORLD OF ELITE HOTELS

*Three distinctive hotels. Five refined experiences.  
One club for every luxury you'll ever need*

Exceptional privileges await you at the most regal of locations across the south of England. Enjoy culinary adventures, celebratory gifts, gourmet escapes away, restorative spa and wellness days, golf days, invitations to events and unique rooms for your own private gatherings.

We've crafted Elite Diners to help you find new ways to make the most of precious time, explore our historic buildings and enjoy a range of unparalleled treats. It gives me the greatest of pleasures for you to become part of our story, and Elite Hotels part of yours.

*Graeme Bateman*, Managing Director





# ASHDOWN PARK HOTEL & COUNTRY CLUB

Imagine a country house hotel in a storybook forest, home to Winnie the Pooh. It is all part of the fascinating history of the 19th century neo-gothic mansion of Ashdown Park within its own enchanting private pocket of 186 acres of the Ashdown Forest. Boasting 106 bedrooms and suites, a fine dining restaurant, a brasserie, al fresco dining, and elegant lounges, it is the perfect place to relax and unwind.

The extensive leisure facilities include pool, gymnasium, outdoor tennis courts, spa treatment rooms and 18-hole par 3 golf course. There is also a stunning converted chapel and an extensive selection of rooms for any gatherings or events.

Wych Cross, Nr. Forest Row, East Sussex RH18 5JR







## THE GRAND HOTEL

Visit the only five star seaside resort hotel in England. Affectionately known as The White Palace, the Grand Hotel Eastbourne commands breathtaking views of the sea and the dramatic cliffs at Beachy Head.

Grand by name but not by nature, we're also one of the friendliest with two of the finest restaurants in Eastbourne, and the most famous hotel lounges. All, including the rooms and suites, recall the days when hotels in East Sussex were the seaside playground of the Victorian rich and famous, and when the wealthy would descend on The Grand with entire entourages.

King Edwards Parade, Eastbourne, East Sussex BN21 4EQ





# TYLNEY HALL HOTEL & GARDENS

Back to an age of elegance and gracious living, Tylney Hall is a Grade II listed building and remains an outstanding example of a luxury country house hotel that has never lost its old world sense of charm.

Beyond its splendour and warmth of a bygone era are all the facilities you expect of today, with luxuriously appointed rooms and suites; gourmet dining and al fresco dining; a beautifully appointed Health Suite with Spa treatment rooms and leisure facilities; including both an indoor and an outdoor pool; and business; conference centre and banqueting facilities that are second to none. Furthermore, the 66 acres of parklands and gardens are famous in their own right, attracting hordes of visitors, and has been a RHS Partner Garden since 2016.

Rotherwick, Hook, Hampshire RG27 9AZ







## Discover Our Hotels & Luxury Experiences

### CULINARY ADVENTURES

Incredible cuisine, luxurious escapes ... embrace the good life with Elite Diners. There is nothing more fabulous than being in cherished company with fine food and wines, and of course in a setting with the perfect backdrop.

At Elite Hotels you are spoilt for choice on how to enjoy the very best British ingredients and cooking. Enjoy sophisticated fine dining in absolute grandeur, casual dining in a relaxed brasserie, or enchanting al fresco dining.

Each Head Chef at our hotels has their own highly individual style, but what unites them is their creative flair which is based on sourcing only the finest and freshest ingredients, often locally, and with results which have been recognised by leading food writers.

#### Ashdown Park Hotel & Country Club

##### Anderida Restaurant

Recognised throughout the country and beyond for its award-winning British cuisine in classically elegant surrounds and view to Sussex countryside.

##### Forest Brasserie (pictured left)

A relaxed brasserie celebrating locally sourced produce, including wines and spirits, from Sussex and Kent.

#### The Grand Hotel

##### The Mirabelle Restaurant

Imagine Victorian seaside splendour reimaged for today. The glamorous restaurant offers the very best of local produce with dream views out to sea.

##### The Garden Restaurant

The revered and lively Garden Restaurant on Eastbourne's seafront serving British favourites with a contemporary twist for breakfast, lunch and dinner.

#### Tylney Hall Hotel & Gardens

##### The Oak Room Restaurant

The fine restaurant has a long-standing reputation for the quality of its cuisine and luxurious surrounds in the main house overlooking the spectacular gardens.



## Discover Our Hotels & Luxury Experiences

### PRIVATE GATHERINGS & EVENTS

Each hotel can offer you a unique party space for occasions befitting a destination of historical importance, with nothing short of five star standards.

Business delegates will have a unique portfolio of places to meet, greet and entertain. You will be looked after by our long serving conference and events teams, providing dedicated support throughout your event, from planning to completion.

For weddings, there are a hundred and one ways to stage a spectacular event at our hotels. Reception and banqueting rooms include a baronial hall, converted chapel and a beautiful summer house overlooking a lake. And with purpose built venues, or secluded buildings available at all hotels, exclusive and very private use is available for all sizes of wedding parties.

### GOLF

Visit Ashdown Park to play one of the most charming and enjoyable 18 hole golf courses in East Sussex, with the last 9 holes being particularly attractive as they meander and wind their way through undulating woodland.

### LUXURY ESCAPES

We're here to look after you with a stay like no other at our four stunning and unique destinations.

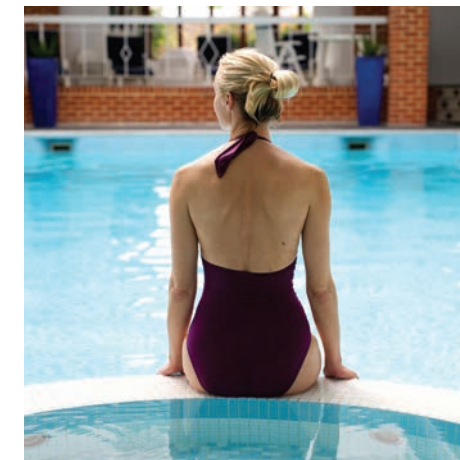
Choose from Ashdown Park and Tylney Hall which were all former mansion houses in the days when elegance and style was the order of the day, or similarly, The Grand at Eastbourne, designed during the heyday of Victoriana.

At every hotel, behind every door, no two rooms or suites are alike. Each one has been decorated and furnished to offer the heights of luxury and their individual characteristics have been enhanced with period pieces and furnishings.

### SPA & WELLNESS

Bring more to your life with luxurious facilities to help you make the most of your day, or a stay.

On offer at each hotel location is a beautiful spa with a full range of treatments from beauty therapist professionals, top of the range gym facilities for those looking for a great workout, indoor pools and The Grand and Tylney Hall additionally with outdoor pools available when staying during the warmer months.



## Member Benefits

### Dine with us

20% off food and drinks when dining for lunch and dinner at Elite Hotel restaurants (excludes lounges and The 19th Hole). Valid all week, except for Saturday dinner periods, for parties up to eight diners.

10% off food and drinks for breakfast, lounge and afternoon tea bookings. Valid Monday to Friday, with a minimum £25 spend required.

### Celebrate with us

Members receive one complimentary Afternoon or Champagne Afternoon Tea experience voucher when dining in a party of four or more taking the same afternoon tea at any Elite Hotel. Valid Monday to Friday. All diners must take the Champagne Afternoon Tea to receive a complimentary Champagne Afternoon Tea.

Members receive one Elite Celebration Champagne voucher to enjoy a bottle of House Champagne at any Elite Hotel when dining for lunch or dinner in a party of four or more.

Exclusive invitations to gourmet events, speaker events, social activities and member-only offers at Elite Hotels.

### Luxury Escapes

Members are entitled to one Elite Complimentary ‘Deluxe’ Room Stay following their first three lunch or dinner dining visits at their selected ‘host’ hotel restaurant to be taken during their membership year. This entitles the member to enjoy a complimentary stay at the host hotel (host meaning which hotel you opted on joining to make the three dining visits at), including breakfast and spa entry. Valid Sunday to Friday. Stay can be transferred to another Elite Hotel for £75.

Room upgrades available from £50. Room stay benefit will only be issued after the relevant dining visits have been completed and cannot be used on the night of the qualifying dining visit. Subject to availability, allocation and prior reservation with advice of voucher use. Excludes bank holiday weekends, and complimentary room stay cannot be used at The Grand Eastbourne for the months of June through to September. Host location can not be amended during the membership term.

Members receive one Elite Stay Experience voucher to enjoy a Deluxe stay for two at any Elite Hotel from £110 inc. VAT, inclusive of breakfast and spa entry. Valid Sunday to Friday. Rate subject to availability, allocation and prior reservation with advice of voucher use. Excludes bank holiday weekends.

Members receive one Elite Sunday Stay voucher entitling the member to a Deluxe Sunday stay at any Elite Hotel for £75 inc. VAT, inclusive of breakfast and spa entry. A three-course dinner pp must be taken on night of stay to validate use. Excludes bank holiday weekends.

10% off the best available room rate for additional stays, subject to availability.

### Spa & Wellness

Members enjoy access to Elite Hotels spa and gym facilities for themselves and a guest when booking a minimum 55-minute treatment per person. Valid Monday to Thursday. During peak seasons a £25 levy may apply to use the spa and gym facilities when taking the minimum 55 minute treatment; please check on booking. Access to the outdoor pool facilities at Tylney Hall and The Grand Eastbourne are available for hotel resident use only, unless quoted as part of a day spa package. Spa use is subject to prior booking, availability and allocation.

10% off spa treatments and spa days, valid Monday to Thursday.

10% off spa products.



### Golf

Members receive two complimentary Golf Passes to enjoy at Ashdown Park Golf Club. Each golf pass is valid when purchasing one or more rounds of golf for the member’s guest to play the same tee time. Only one pass per tee. Subject to availability and prior reservation.

### Private Gatherings & Events

Members receive an Elite £250 Meeting Room voucher to redeem against any meeting room hire with a minimum of eight delegates in a private room in any Elite Hotel. Not valid in conjunction with any other offer, or for meetings booked prior to membership.

Members receive an Elite £250 Celebration, Event or Wedding voucher to redeem against any private dining room with a minimum of eight diners in a private room. Not valid in conjunction with any other offer, or for events booked prior to membership.

### New Member Recommendations

For each recommendation who joins, the member receives a bottle of champagne to enjoy when dining in an Elite Hotel restaurant in a party of two or more; or a ‘Spa Pass’ for two providing complimentary access to an Elite Hotel spa without purchasing any treatments, valid Monday to Thursday; or additional Golf voucher as above, if the champagne is not desired. Maximum of three referral vouchers per member.

### Luxury Restaurant Club

Members receive complimentary digital enrolment into the Luxury Restaurant Club providing privileges and exclusive benefits at leading restaurants across the UK. [luxuryrestaurantguide.com](http://luxuryrestaurantguide.com). See your welcome email for log-in details, or call +44 (0) 1276 850581.

### Useful Contact Numbers

#### Ashdown Park Hotel & Country Club

Dining and room: +44 (0) 1342 824988  
Private gatherings and events: +44 (0) 1342 824988  
Spa: +44 (0) 1342 824988  
Golf: +44 (0) 1342 820254

#### The Grand Hotel

Dining and room: +44 (0) 1323 412345  
Private gatherings and events: +44 (0) 1323 412345  
Spa: +44 (0) 1323 435025

#### Tylney Hall Hotel & Gardens

Dining and room: +44 (0) 1256 764881  
Private gatherings and events: +44 (0) 1256 764881  
Spa: +44 (0) 1256 764881

#### Elite Diners

New member recommendations: +44 (0) 1276 850581







## Conditions of use

### **Vouchers**

Please note vouchers cannot be replaced, are non-transferable and must be presented with a valid membership card.

### **Lost & Stolen Cards**

Please report any lost or stolen cards to the membership office immediately. An administrative charge may be incurred. A replacement card will have the same expiry date as the previous card. Replacement card fee £15.

### **Membership Cards**

The card is an individual, personalised, non-transferable membership card. All benefits are subject to presentation of a valid membership card.

The membership card is property of the Issuing Agent and must be returned upon request. All cards will be valid for 12 months from the date of purchase.

Elite Hotels reserves the right to withdraw, cancel, vary or in any way change at any time, without notice, any discount, reward or other benefits previously offered or expressed as available to you as a member of Elite Diners. Elite Hotels or Issuing Agent shall not be liable for any loss or damage from such a withdrawal, cancellation or variation. Any liability the Hotel or Issuing Agent may have to the member of any sort shall not under any circumstance exceed the annual fee for the membership to Elite Diners paid to the Issuing Agent.

### **Exclusions**

The membership card and benefits are not valid on February 14th, December 23rd to December 26th or December 31st, Mothering Sunday or for specified special functions and events. Room benefits may be restricted during certain public holidays or events and not valid bank holiday weekends. The Grand Eastbourne complimentary stay voucher is not valid for the months of June through to September.

### **Cancellations**

Cancellations are honoured up to 14 days from the date of purchase, but such termination shall not be effective until all cards and membership material have been returned to the Issuing Agent unused. No refund will be payable until such action is completed. Subject to a cancellation fee of £25.